

Powered by GPS and IoT technology
AT&T Fleet Complete provides

mission-critical insight, vehicle telematics and business intelligence

Tackle
common
fleet
challenges



Driver behavior reports
Monitor speeding, idling, harsh
braking and hard cornering



Compatible with ELD
Automate your driver HOS
tracking and comply with ELD



Optimal engine health
Capture over 20 engine data
point and minimize down time



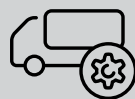
Quick self or pro install
Install the devices yourself or have one
of our certified installers come onsite



Light or heavy-duty fleets
Scalable for small, medium to large
light or heavy-duty fleets and assets



Driver coaching with video
Log GPS and dashcam-based data
to improve driver coaching



Streamline maintenance
Perform DVIRs, log defects and
schedule regular maintenance



Compatible with Add-ons
Manage tasks, resources, dispatching,
EPTT, Wi-Fi connectivity and more

AT&T Fleet Complete solution solar system

End-to-end system

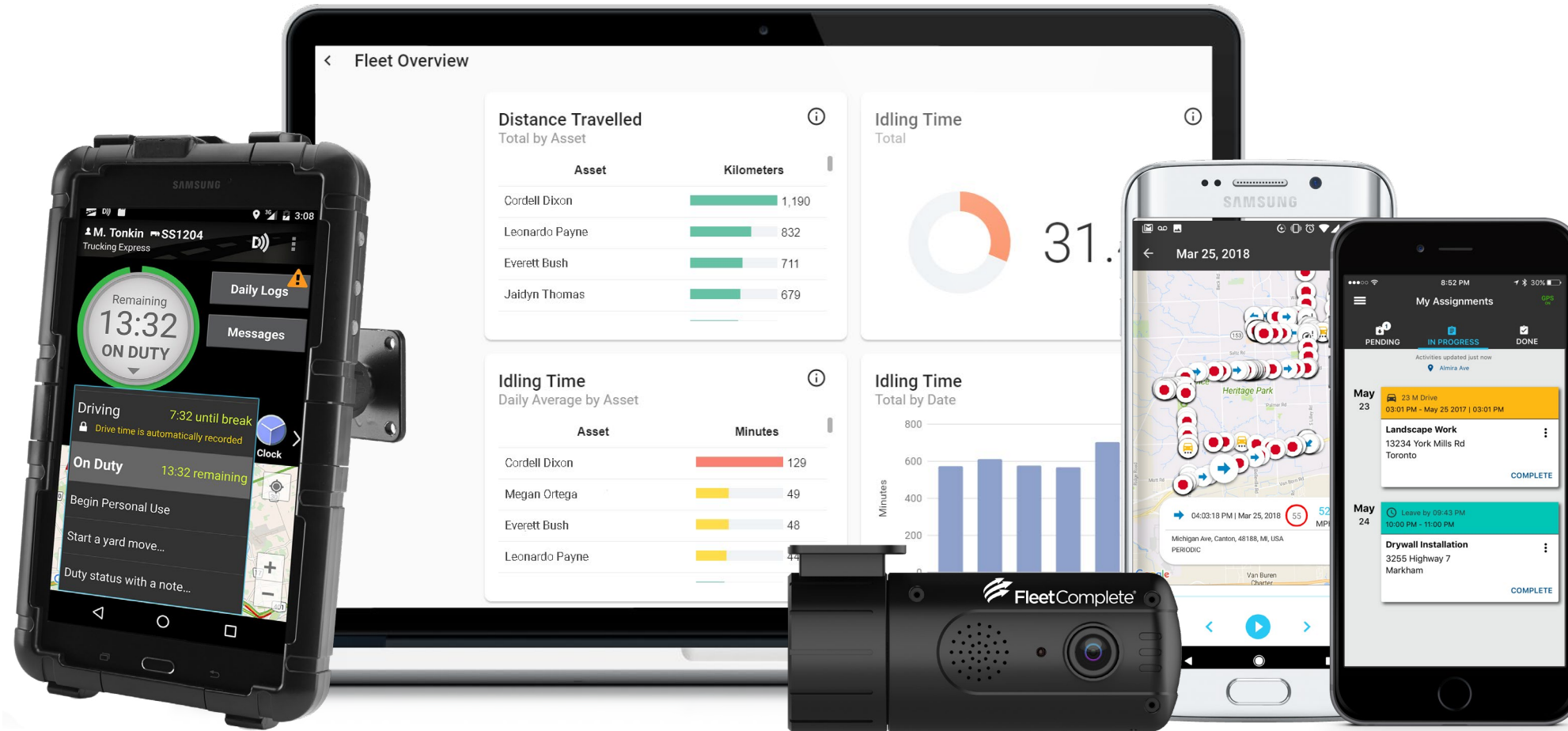
- Track, ping, review from one screen
- Improving operations for managers and drivers
- User configurable reporting parameters

Connected mobility

- 4G LTE connectivity nationwide
- Compatible with Android and iOS
- Web-based access anytime anywhere

Analytical insights

- Vehicle and asset usage and health tracking
- Video and GPS-based timestamped location and behavior reporting
- Risk assessment and compliance review



Ultimate Bundle with ELD

- GPS Tracking
 - Dashcam
 - ELD + DVIR
- \$49** per month

In-Cab Compliance

- Tracking + ELD
 - EPTT + Mic + Tablet
 - GPS Lockbox
- \$59** per month

Vehicle Tracking

- GPS Tracking
 - Driver behavior
 - Engine data
- \$20** per month

Slap-n-track

- Asset tracking
 - 5 sensors
 - LTE network
- \$10** per month

att.fleetcomplete.com/bundles

GM

FLEET

Powerful telematics and driver behavior analytics tool

Supported by a sophisticated GPS software, this user-friendly fleet tracking solution provides near real-time view on all of your fleet activities. Performance dashboards and reports give fleet managers a critical overview of their fleet to help improve productivity, efficiency and safety.

att.fleetcomplete.com/fleet

ASSET

Slap-n-track outdoor asset tracking

One of the market's smallest asset tracking devices captures GPS location, humidity, temperature, light exposure and impact status of assets at regular intervals, alerting you to any irregularity or activity.

att.fleetcomplete.com/asset

TRAILERS

Heavy-duty asset tracking in near real-time

Full visibility into near real-time location and operation status of your heavy-duty equipment, containers, trailers, and bobcats anywhere on your mobile device.

att.fleetcomplete.com/slap-n-track

COMPLIANCE

ELD and DVIR solutions for your compliance needs

Together with GPS Lockbox, AT&T Fleet Complete offers drivers a unique electronic logging solutions, designed to simplify ELD compliance and avoid regulatory fines.

att.fleetcomplete.com/eld

TASKS

Cloud-based worker and task management tool

Have full visibility of your crew's workload, in-progress/pending assignments and availability with one look at the screen.

att.fleetcomplete.com/tasks

PEOPLE

Added level of safety to lone workers and rescue teams

Secured on a worker's belt, when a panic button has been activated, or indication of man-down (prolonged inactivity) modes detected, the device will immediately alert the head office of duress in the field.

att.fleetcomplete.com/people

DASHCAMS

Video telematics solution focused on driver safety

Fleet Complete Vision equips you with a pair of eyes in the work field to document what actually happens, while helping coach drivers en route with an in-cab voice assistance.

att.fleetcomplete.com/vision

EPTT

Ping, locate, and communicate with your field staff

We provide a smooth connection between all AT&T Enhanced Push-to-Talk users for an effortless communication among staff. This way, you will be able to track your fleet and communicate with the field staff without calling in.

att.fleetcomplete.com/eptt

WI-FI

Integrated telematics and networking solution

Scalable with remote cloud-based management, AT&T Fleet Complete and Cradlepoint offer an integrated fleet management and network connectivity solution with full routing, VPN and GPS tracking capabilities over LTE.

att.fleetcomplete.com/wifi

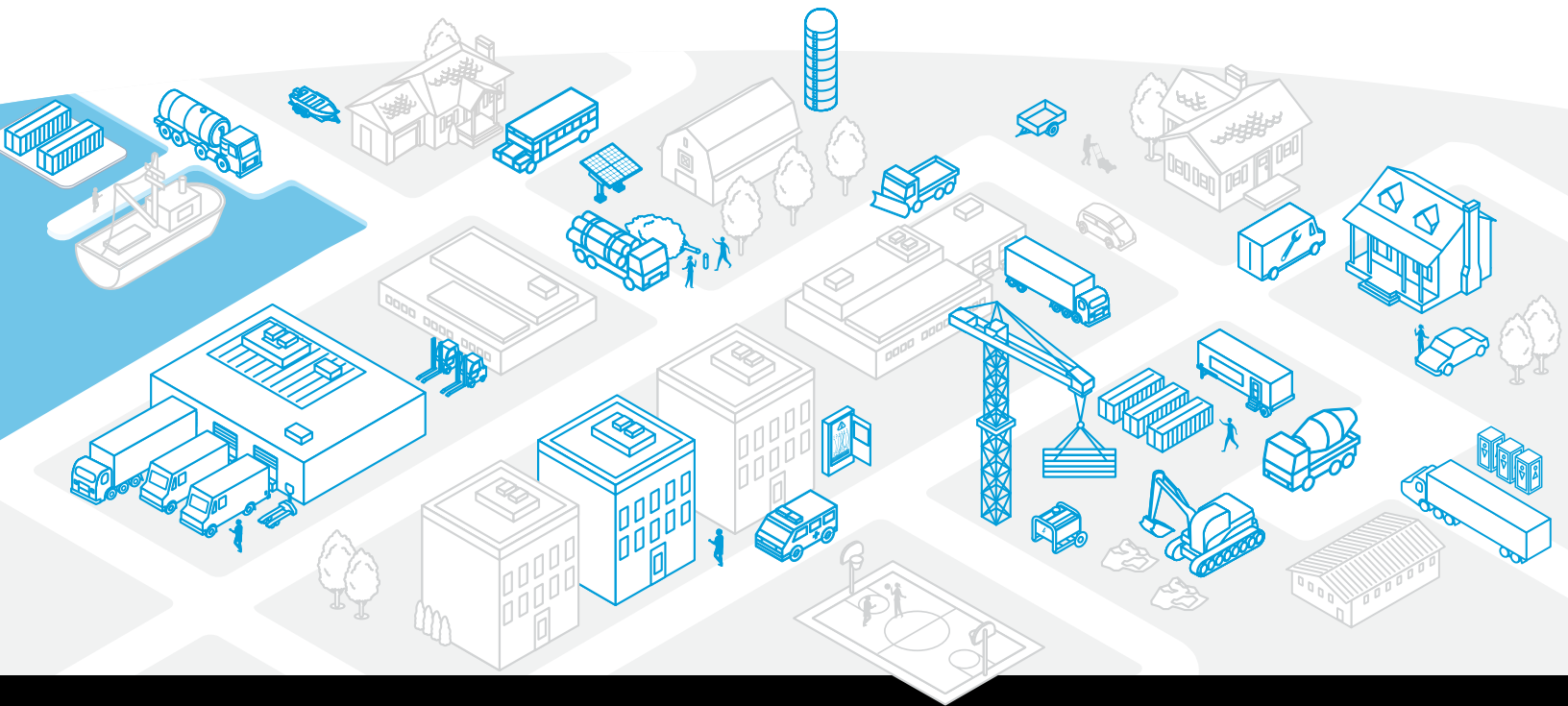
GM & CONNECTED CAR

Cutting-edge connectivity technology for GM customers

OnStar connectivity, AT&T Fleet Complete and Connected Car offer a unique vehicle management platform designed to improve your customer service, view your fleet's performance in near real time, remotely manage staff and asset safety, and get customized report analysis.

att.fleetcomplete.com/gm

To learn more about AT&T Fleet Complete vehicle management, compliance and mobile connectivity solutions, contact your local AT&T Representative or visit att.fleetcomplete.com.



Prime telematics solution for FirstNet customers

AT&T Fleet Complete Internet of Things fleet management platform has been selected as the solution of choice for FirstNet customers. With a wide portfolio of integrated systems and connected solutions, AT&T Fleet Complete provides FirstNet customers transparency and connectivity into the mission-critical fleet operations.



Important Information

AT&T Fleet Complete ("Fleet Complete") as described herein is available to AT&T's qualified customers participating in AT&T's contract with NASPO ValuePoint. AT&T Fleet Complete is subject to the terms and conditions of the NASPO ValuePoint Agreement, and applicable Sales Information. For qualified customers on the NASPO ValuePoint Agreement: Any Additional Product Terms not allowable under applicable law will not apply, and the NASPO ValuePoint Agreement will control in the event of any material conflict between the NASPO ValuePoint Agreement and the Additional Product Terms. Pricing. Prices do not include taxes or other fees and are subject to change. Rates are not subject to any additional discounts under any AT&T discount plan. Additional credit and eligibility restrictions apply. Additional charges, terms, conditions and restrictions may apply. Offer and pricing subject to change without notice. AT&T privacy policy may be viewed at www.att.com/privacy.