

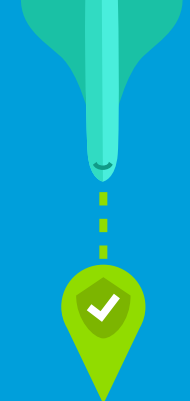
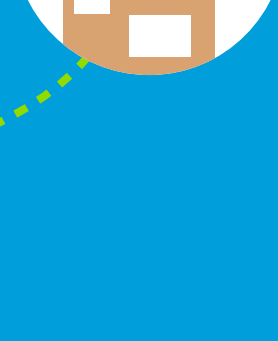
# Is Dedicated Ethernet right for your business?

Protect **high volumes** of **sensitive** data with incredibly **secure**, site-to-site connectivity



## You've heard of Ethernet.

It's a **networking connection** that handles more data, more bandwidth, more locations, and bigger workloads. **But what is dedicated Ethernet?**



**Dedicated** means that it's an Ethernet connection between **2 locations**—and it's secure because it provides a **direct, non-stop connection** between those two points. No detours on, or touchpoints with, the public internet.

## How it works

Metaphorically speaking, dedicated Ethernet works like a bullet train: **a single line of track** connecting two points. **No one else** shares this track with your train.

Data—**large amounts of it**—can really fly. Since your track doesn't intersect with other tracks (the public internet), people who want to steal your cargo (data) **can't get to it**.



## Benefits by the numbers

**100+** years of networking expertise

**650,000** business buildings lit with fiber from AT&T

**99.999%** of availability (uptime)

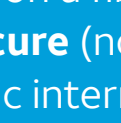
**400Gbps** as a top-end speed

### Use case 1

## Hospital complex

Hospital imaging files (X-rays, CAT scans, MRI, 3D body scans) **can be huge**.

Dedicated Ethernet transfers this **sensitive, private data** from one building to another.



It's **blazing fast** (guaranteed speeds on a fiber network) and **secure** (no connection to public internet).



### Use case 2

## Manufacturing

Computer Aided Design (CAD) and Computer Aided Manufacturing (CAM) files often have **huge payloads of data**.

Dedicated Ethernet's guaranteed speeds support the **clockwork precision** of critical processes.

Manufacturers can **securely** transport the data.



## Ask yourself



- Do I need **fast, high bandwidth** data transfer?
- Is network **reliability and survivability** vital to my business?
- What are my **plans** for disaster recovery?

## AT&T Dedicated Ethernet

We can provide your business a **private, dedicated** Ethernet for your most demanding applications.

### Key benefits

- **Highly secure** and **reliable** point-to-point communications
- **Dedicated** access to data center and cloud applications
- **High speed** data replication

### 99.999% availability

Network uptime, as outlined in our service level agreement with you.

### From 1 Gbps up to 400 Gbps

Choose your level of **blazing** upload and download speeds.

### Private! Keep out!

Want to give hackers a bad day? Go dedicated. Your data is more **secure** when using a **dedicated, private** connection with protected routing options.



**2+**

## Need more than two locations connected?

No problem. Try **AT&T Ultravailable Network<sup>SM</sup>** for a fully managed, customizable, dedicated Ethernet solution connecting multiple locations.

## We're here for you

Are you a business wanting to better support your workforce, customers, and locations? Contact us today. We have professionals who can demystify the technology for you and get you up and running with emerging technology and other solutions for your business.

AT&T Business is here to support businesses in a big way. Our Tech Demystified series can help you decide what products and services will work best for you.

To learn more, visit [Dedicated Ethernet Solutions](#) or contact your local sales representative.