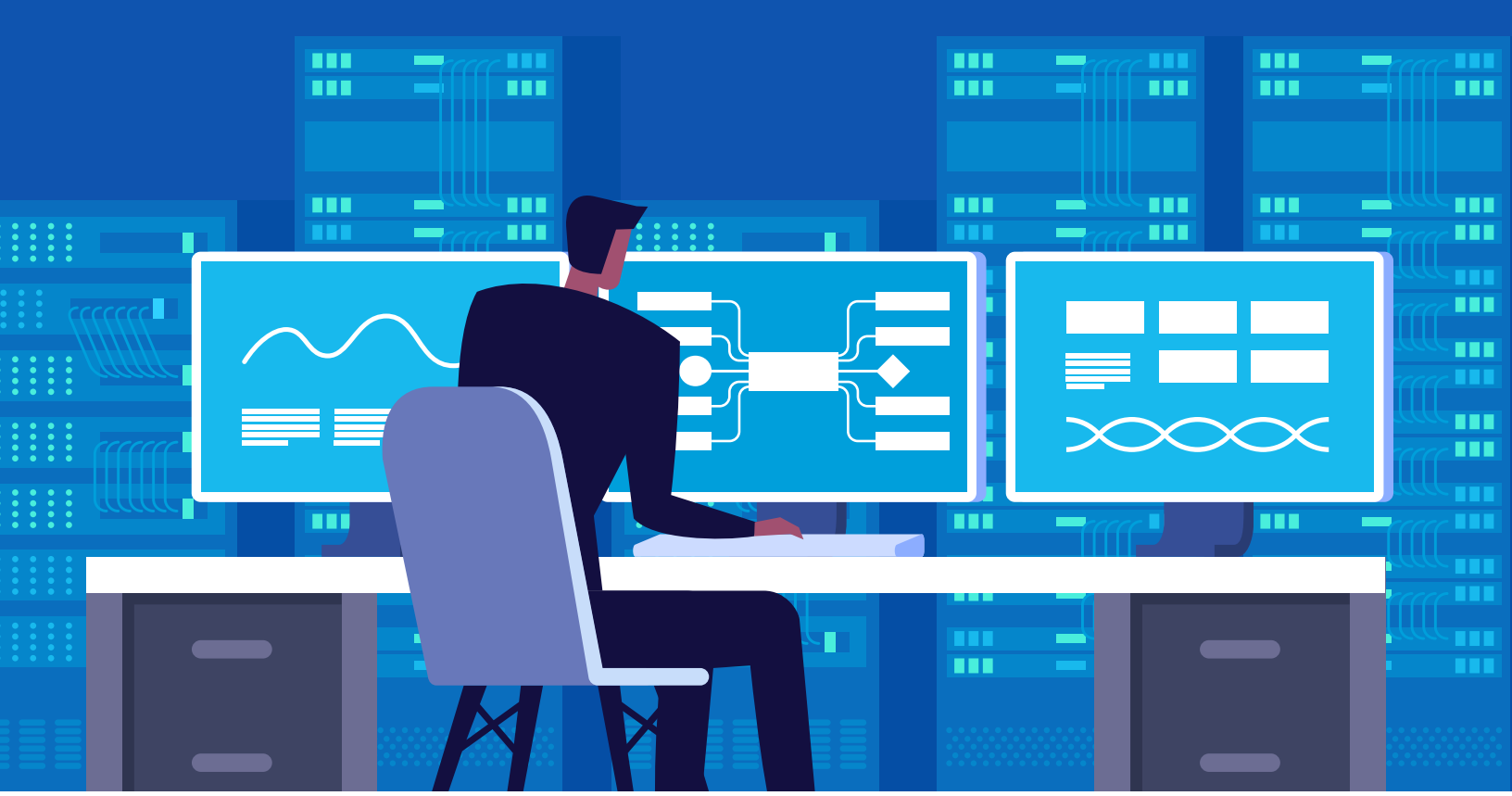


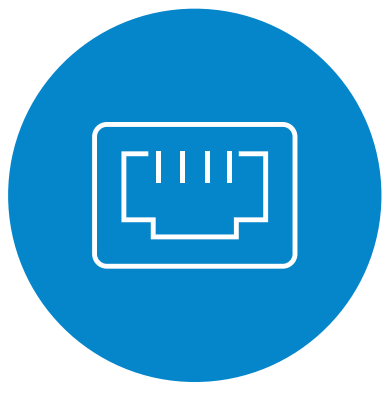
The networking solution that puts you in control

Connect 2 or more locations with **AT&T Switched Ethernet**

AT&T Ethernet services connect business locations using our highly secure nationwide fiber network. We offer AT&T Switched Ethernet with Network on Demand – a self-service, flexible, affordable network that transfers data as if across one Local Area Network (LAN).



Why choose AT&T Switched Ethernet?



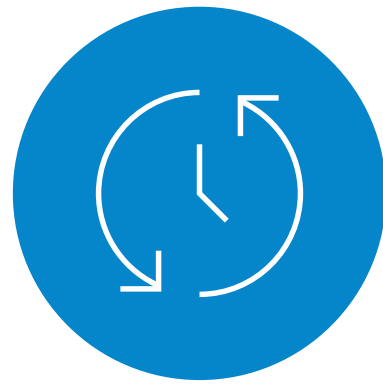
Versatility: There are **5 options** to match your application performance needs.



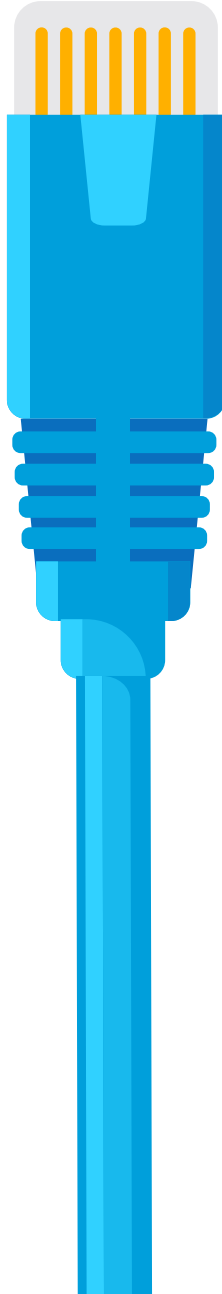
It's easy and scalable. You can quickly add sites or **change bandwidth as needed.**



Only pay for what you use. The monthly price is prorated to your usage.



24-hour monitoring and optional management.



Take advantage of other real time self services:

Change network configurations



Internet access



Monitor network conditions



Generate reports and more



Speeds from **2 Mbps** to **100G**

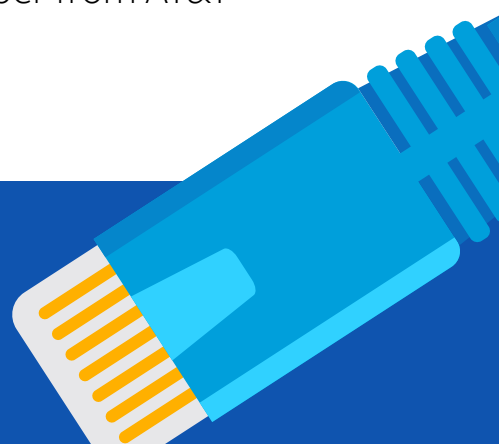


AT&T Fiber is available to nearly **15 million customer locations** in **90+ metro areas in the U.S.**



More than **650,000 U.S. business buildings** are lit with fiber from AT&T

We're here for you



Are you a business that is wanting to better support your workforce, customers, and locations? Contact us today. We have professionals who can demystify the technology for you and get you up and running with emerging technology and other solutions for your business.

AT&T Business is here to support businesses in a big way.

Our Tech Demystified series can help you decide what products and services will work best for your business.

Are you ready to seamlessly transfer voice, video and data between locations, cloud-based servers, or the internet? To learn more, visit **AT&T Switched Ethernet with Network on Demand** or **contact your local sales representative.**